

CHATEAU STE. MICHELLE

50 YEARS OF
WASHINGTON'S
FOUNDING WINERY

Chateau Ste. Michelle's rich heritage dates back to the era of the prohibition repeal in 1912. Originally established on an estate in Seattle, Chateau's founding fathers set to prove wrong the idea that great wine can only come from California or Italy. The winery has established itself as a pioneer of the Washington wine region, producing award-winning wines that come from combining Old World winemaking traditions with New World innovation. Enjoy these special selections of Ste. Michelle offerings, including the Anniversary Cabernet Sauvignon to celebrate 50 years – and more to come – of remarkable Ste. Michelle wines.

Chateau Ste. Michelle Sauvignon Blanc CV	10 / 14 / 39
Chateau Ste. Michelle Cabernet Sauvignon	12 / 17 / 47
Erath Resplendent Pinot Noir	12 / 17 / 47
Northstar Merlot	16 / 23 / 63
Captain's List	
Castella Della Sala Chardonnay	24 / -- / 95
Spring Valley Uriah Red Wine	22 / -- / 87
Col Solare Cabernet Sauvignon	26 / -- / 103

WHITE WINES

CHAMPAGNES & SPARKLING WINES

La Marca Prosecco <i>Italy NV (187ml)</i>	11
Cantine Maschio Prosecco <i>Brut Italy</i>	8.5 / - / 40
Domaine Ste. Michelle Brut <i>Columbia Valley, WA</i>	9 / - / 43
Graham Beck Brut Rosé <i>South Africa NV</i>	11 / - / 48
Moët Chandon Imperial <i>France</i>	14 / - / 66
Veuve Clicquot "Yellow Label" <i>France</i>	105
Dom Perignon <i>France</i>	250

PINOT GRIS / GRIGIO

Ecco Domani Pinot Grigio <i>Italy '16</i>	8 / 11 / 31
MacMurray Ranch Pinot Gris <i>Sonoma '16</i>	38
J. Vineyards Pinot Gris <i>Russian River Valley '16</i>	41
King Estate "Signature" Pinot Gris <i>Oregon '16</i>	11 / 15.5 / 43
🍷 Santa Margherita Pinot Grigio <i>Italy '15</i>	49

INTERESTING WHITES

Montevina White Zinfandel <i>California '16</i>	7.5 / 10 / 29
Bricco Riella Moscato D'Asti <i>Italy '16</i>	8 / 11 / 31
Alamos Torrontes <i>Argentina '16</i>	8.5 / 11.5 / 33
Dry Creek Chenin Blanc <i>Clarksburg '16</i>	35
Laurenz Singing Gruner Veltliner <i>Austria '16</i>	9 / 12.5 / 35
Côtes-du-Rhône Belleruche Rosé <i>France '16</i>	9.5 / 13 / 37
Miner Viognier "Simpson Vineyard" <i>Napa Valley '16</i>	11 / 15.5 / 43
Conundrum White <i>California '15</i>	11.5 / 16 / 45
Wente Pinot Noir Rose <i>Monterey '16</i>	12 / 17 / 47
Trimbach Gewurztraminer <i>France '13</i>	52
🍷 Miraval Côtes de Provence Rosé <i>France '16</i>	55
Ken Wright Cellars Pinot Blanc <i>Willamette Valley '15</i>	58
Chimney Rock Elevage Blanc <i>Napa Valley '14</i>	76

RIESLING

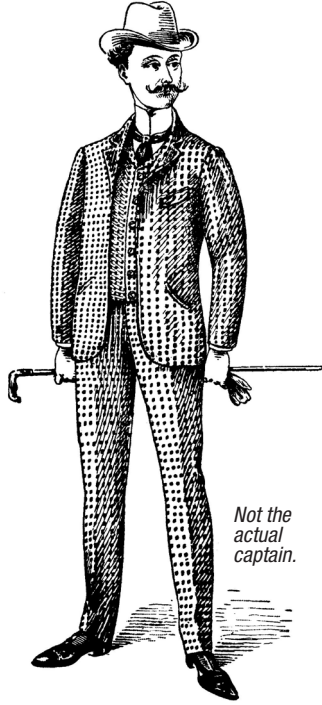
Ch. Ste. Michelle <i>Columbia Valley WA '15</i>	8 / 11.5 / 33
Saint M <i>Germany '15</i>	37
Koehler Ruprecht Kabinett Halbtrocken <i>Germany '12</i>	48
Trimbach Alsace <i>France '12</i>	53
🍷 Trefethen Dry <i>Napa Valley '15</i>	12 / 17 / 51
🍷 Eroica Ch. Ste. Michelle <i>Columbia Valley WA '15</i>	55

SAUVIGNON BLANC / FUME BLANC

Seaglass Sauvignon Blanc <i>Santa Barbara '16</i>	8 / 11.5 / 33
Murphy Goode <i>Sonoma '15</i>	34
Ferrari Carano Fume Blanc <i>Sonoma Valley '16</i>	10 / 14 / 41
Ritual Sauvignon Blanc <i>Casablanca Valley '14</i>	11 / 15.5 / 43
Kim Crawford Sauvignon Blanc <i>New Zealand '16</i>	11.5 / 16 / 45
🍷 Matanzas Creek Sauvignon Blanc <i>Sonoma Valley '15</i>	45
Honig Sauvignon Blanc <i>Napa Valley '16</i>	47
🍷 Domaine de Reuilly "Les Pierres Plates" <i>France '15</i>	50
Stag's Leap Sauvignon Blanc <i>Napa Valley '15</i>	57
Stonestreet Estate Sauvignon Blanc <i>Alex Calley '15</i>	15 / 22 / 59
Cloudy Bay Sauvignon Blanc <i>New Zealand '17</i>	67

CHARDONNAY

Edna Valley Vineyard <i>California '15</i>	34
Hess <i>Monterey '15</i>	36
J. Lohr Riverstone <i>Arroyo Seco '16</i>	9.5 / 13 / 37
Clos du Bois <i>California '15</i>	38
Oyster Bay <i>New Zealand '16</i>	39
Line 39 <i>California '16</i>	12 / 17 / 47
Mer Soleil Silver <i>Monterey '15</i>	48
Cuvaison Carneros <i>California '13</i>	48
Bernardus <i>Monterey '14</i>	52
Louis Jadot Pouilly Fuisse <i>France '15</i>	55
Stag's Leap "Karia" <i>Napa Valley '14</i>	69
Jordan <i>Russian River Valley '14</i>	72
Rombauer <i>Carneros '16</i>	75
Cakebread <i>Napa Valley '15</i>	79
🍷 Patz & Hall "Dutton Ranch" <i>Sonoma '15</i>	82
🍷 Grgich Hills <i>California '11</i>	85
Kistler Les Noisetiers Chardonnay <i>Sonoma '15</i>	96



Not the actual captain.

THE CAPTAIN'S LIST

CABERNET SAUVIGNON

Stag's Leap "Fay"
Napa Valley '13
150

Caymus
Napa Valley '15
120

MERITAGE & RED BLENDS

Quintessa Rutherford
Napa Valley '12
225

Cardinale Red Blend
Napa Valley '12
250



Denotes this wine has been rated 90+ with either Wine Spectator or Wine Enthusiast.

RED WINES

PINOT NOIR

Estancia <i>Monterey '15</i>	42
Meiomi Pinot Noir <i>Sonoma, CA '16</i>	12 / 17.5 / 49
MacMurray Ranch <i>Sonoma, CA '15</i>	50
Wente Pinot Noir <i>Monterey '14</i>	13 / 18 / 51
Erath Estate Selection <i>Willamette Valley '13</i>	53
Talbot "Kali Hart Vineyard" <i>Monterey '14</i>	55
Wild Horse <i>Central Coast '15</i>	59
Au Bon Climat <i>Santa Barbara '15</i>	60
Benton Lane <i>Willamette Valley Oregon '14</i>	15.5 / 22 / 62
Ken Wright Cellars <i>Willamette Valley '14</i>	67
Sokol Blosser <i>Willamette Valley Dundee Hills Oregon '13</i>	77
Gary Farrell <i>Russian River Valley '14</i>	80
La Crema <i>Anderson Valley '13</i>	83
🍷 Domaine Serene "Yamhill Cuvee" <i>Oregon '14</i>	89

CABERNET SAUVIGNON

Main St. Winery <i>California '15</i>	31
Murphy-Goode <i>California '13</i>	37
Joel Gott 815 <i>California '15</i>	11 / 15.5 / 43
Chaeatu Souverain <i>California '14</i>	12 / 17 / 47
Hess "Allomi" <i>Napa Valley '15</i>	59
Frei Brothers Reserve <i>Alexander Valley '14</i>	56
J Lohr Hilltop <i>Paso Robles '15</i>	15 / 21.5 / 60
Simi <i>Alexander Valley '14</i>	61
Franciscan <i>Napa Valley '14</i>	67
Louis M Martini <i>Napa Valley '14</i>	69
Mount Veeder <i>Napa Valley '13</i>	77
Ferrari Carano <i>Alexander Valley '13</i>	79
Stag's Leap "Artemis" <i>Napa Valley '15</i>	22 / 32 / 87
Terra Valentine Spring Mountain District <i>Napa Valley '15</i>	87
Faust <i>Napa Valley '14</i>	91
🍷 Robert Mondavi "Oakville" <i>Napa Valley '12</i>	101
Jordan <i>Alexander Valley '13</i>	104
🍷 La Jota Howell Mountain <i>Napa Valley '13</i>	116
Chimney Rock <i>Napa Valley '14</i>	122
Rockaway <i>Sonoma '12</i>	125
Silver Oak Cabernet <i>Napa Valley '12</i>	175

INTERESTING REDS

Rosenblum Red Zinfandel <i>CA XXXIX</i>	8.5 / 11.5 / 33
Gascon Malbec <i>Mendoza, Argentina '16</i>	9 / 12.5 / 35
Spellbound Petite Sirah <i>California '15</i>	9.5 / 13 / 37
Layer Cake Zinfandel <i>Puglia, Italy '16</i>	42
Ravenswood Zinfandel <i>California '15</i>	43
Peppoli Chianti Classico <i>Tuscany, Italy '15</i>	12 / 17 / 47
🍷 Shatter Grenache, <i>France '13</i>	51
Achaval Ferrer Malbec, <i>Mendoza, Argentina '15</i>	54
Frog's Leap Zinfandel <i>Napa Valley '15</i>	65
🍷 Ruffino "Modus" <i>Tuscan, Italy '13</i>	59
Two Hands "Gnarly Dudes" Shiraz <i>Australia '16</i>	100
🍷 Chateaneuf Du Pape Domaine Du Grand Tinel <i>France '12</i>	110
Mastrojanni Brunello Di Montalcino <i>Italy '10</i>	140

MERLOT

Red Rock <i>California '15</i>	31
J. Lohr "Los Osos" <i>Paso Robles '15</i>	9 / 12.5 / 35
Oyster Bay <i>New Zealand '15</i>	39
Chateau Ste. Michelle "Indian Wells" <i>Washington '15</i>	11.5 / 16 / 45
Hogue Genesis <i>Washington '13</i>	49
Duckhorn "Decoy" <i>Napa Valley '15</i>	52
Rutherford Hill <i>Napa Valley '13</i>	61
🍷 Northstar <i>Columbia Valley '12</i>	70
Twomey <i>Napa Valley '12</i>	100
🍷 Pahlmeyer <i>Napa Valley '14</i>	150

MERITAGE & RED BLENDS

Veramonte Primus <i>Chile '14</i>	11 / 15.5 / 43
Conundrum Red <i>California '15</i>	47
Ghost Pines Red Blend <i>California '13</i>	59
Mulderbosch "Faithful Hound" <i>South Africa '13</i>	65
Owen Roe "Abbot's Table" <i>Columbia Valley '15</i>	70
🍷 Orin Swift "The Prisoner" <i>Napa Valley '16</i>	18 / - / 71
🍷 Cain Cuvee <i>Napa Valley NV '13</i>	75
Hess Collection "Block 19" Cuvee <i>Napa Valley '13</i>	77
Symmetry <i>Sonoma '12</i>	105
Col Solare <i>Washington '14</i>	115
Opus One '11	275



SUNDAY WINE SPECIAL

Half price bottles of wine under \$100 or 25% off bottles of wine \$100 and over.

Vintages are subject to change due to availability.