

CHATEAU STE. MICHELLE

50 YEARS OF
WASHINGTON'S
FOUNDING WINERY

Chateau Ste. Michelle's rich heritage dates back to the era of the prohibition repeal in 1912. Originally established on an estate in Seattle, Chateau's founding fathers set to prove wrong the idea that great wine can only come from California or Italy. The winery has established itself as a pioneer of the Washington wine region, producing award-winning wines that come from combining Old World winemaking traditions with New World innovation. Enjoy these special selections of Ste. Michelle offerings, including the Anniversary Cabernet Sauvignon to celebrate 50 years – and more to come – of remarkable Ste. Michelle wines.

Chateau Ste. Michelle Sauvignon Blanc CV	10 / 14 / 39
Chateau Ste. Michelle Cabernet Sauvignon	12 / 17 / 47
Erath Resplendent Pinot Noir	12 / 17 / 47
Northstar Merlot	17 / 23 / 67
<i>Captain's List</i>	
Castella Della Sala Chardonnay	24 / -- / 95
Spring Valley Uriah Red Wine	22 / -- / 87
Col Solare Cabernet Sauvignon	26 / -- / 95

WHITE WINES

CHAMPAGNES & SPARKLING WINES

La Marca Prosecco, (187ml) <i>Italy NV</i>	10
Blanc de Bleu Cuvée Mousseux (187ml) <i>California</i>	10
Anna de Codorniu Blanc de Blancs Cava (187ml) <i>Spain</i>	10
Jean-Louis Charles De Fère Brut (187ml) <i>France</i>	10
Maschio Sparkling Rosé (187ml) <i>Italy</i>	10
Domaine Ste. Michelle Brut <i>Columbia Valley, WA</i>	9.5 / -- / 39
Cantine Maschio Prosecco Brut <i>Italy</i>	10.5 / -- / 43
"Domaine Carneros" Brut by Taittinger <i>Napa Valley '12</i>	73
Francois Montand Blanc de Blanc 1.5L	90
Roederer Estates "L'Ermitage" <i>Anderson Valley '09</i>	99
Moët Chandon Imperial <i>France</i>	24 / -- / 105
Veuve Clicquot, "Yellow Label" Brut <i>France</i>	110
Taittinger "Prestige" Brut Rosé <i>France</i>	115
Tattinger Cuvee Rosé 1.5 L	220
Veuve Cliquot "Yellow Label" Brut 1.5L	225
Moët & Chandon "Cuvee Dom Perignon" <i>France '06</i>	250
Louis Roederer "Cristal" Brut <i>France '09</i>	275

PINOT GRIS / GRIGIO

Ecco Domani Pinot Grigio <i>Italy '16</i>	8 / 11 / 31
Mac Murray Ranch Pinot Gris <i>Russian River Valley '15</i>	39
King Estate "Signature" Pinot Gris <i>OR '16</i>	12.5 / 17 / 49
Santa Margherita Alto Adige Pinot Grigio <i>Italy '16,'17</i>	55

INTERESTING WHITES

Montevina White Zinfandel <i>Amador '16</i>	7.5 / 10 / 29
Côtes-du-Rhône Belleruche Rosé <i>France '16</i>	9 / 12.5 / 38
Alamos Torrontes <i>Argentina '16</i>	35
Martin Codax Albarino <i>Spain '16</i>	9.5 / 13 / 37
Colome Torrontes <i>Argentina '15,'16</i>	9.5 / 13 / 37
Laurenz "Singing" Gruner Veltliner <i>Austria '15</i>	11 / 15 / 43
Caymus Conundrum White <i>California '15</i>	11.5 / 16 / 49
St. Suprey "Virtu" White Blend <i>Napa Valley '16</i>	48
Miner Viognier "Simpson Vineyard" <i>Napa Valley '14</i>	49
Miraval Côtes de Provence Rosé <i>France '16</i>	52
Maison Louis Jadot Pouilly Fuisse <i>France '15</i>	55
Chimney Rock "Elevage Blanc" <i>Napa Valley '14</i>	85

RIESLING

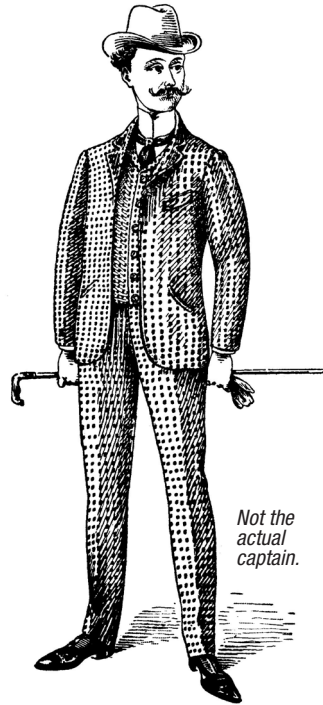
Ch. Ste. Michelle <i>Columbia Valley, WA '16</i>	8.5 / 11.5 / 33
Saint M <i>Germany '16</i>	36
Dr. Loosen, "Blue Slate" <i>Germany '16</i>	57
Trefethen Dry <i>Napa Valley '15</i>	12 / 17 / 63
Chateau Ste. Eroica <i>Yakima Valley, WA '15</i>	56
Trimbach Alsace <i>France '14</i>	61

SAUVIGNON BLANC / FUME BLANC

Seaglass <i>Santa Barbara '16</i>	8.5 / 11.5 / 33
Ferrari Carano Fume Blanc <i>Sonoma Valley '16</i>	41
Matanzas Creek <i>Sonoma County '16</i>	42
Honig <i>Napa Valley '16</i>	11 / 15 / 43
Kim Crawford <i>New Zealand '16</i>	12.5 / 17.5 / 45
Pascal Jolivet, "Attitude" <i>France '15</i>	49
Veramonte "Ritual" <i>Chile '14</i>	51
Cloudy Bay <i>New Zealand '17</i>	63

CHARDONNAY

J. Lohr "Riverstone" <i>Arroyo Seco '16</i>	10 / 14 / 40
Line 39 <i>California '16</i>	12.5 / 17.5 / 49
Bernardus <i>Monterey '14</i>	64
Cuvaison "Carneros" <i>Napa Valley '13</i>	58
Stag's Leap "Karia" <i>Napa Valley '15</i>	66
Rombauer <i>Carneros '16</i>	70
Patz & Hall "Dutton Ranch" <i>Russian River Valley '15</i>	85
Jordan <i>Russian River Valley '15</i>	19 / 27 / 75
Mer Soleil "Silver" <i>Santa Lucia Highlands '15</i>	55
Grgich Hills <i>Napa Valley '13</i>	78
Cakebread Cellars <i>Napa Valley '15</i>	81
Miner "Wild Yeast" <i>Napa Valley '12</i>	95
Ramey Hudson <i>Napa Valley '12</i>	63
Far Niente <i>Napa Valley '15</i>	103
Kistler "Les Noisetiers" <i>Sonoma County '15</i>	105
Dumol "Chloe" <i>Russian River Valley '12,'14</i>	115



Not the actual captain.

THE CAPTAIN'S LIST

CABERNET SAUVIGNON

Silver Oak <i>Napa Valley '09,'10,'13</i>	160
Paul Hobbs <i>Napa Valley '11,'13</i>	170
Chateau Montelena <i>Napa Valley '07</i>	190
Merus Cabernet <i>Napa Valley '09,'12</i>	225
Heitz "Martha's Vineyard" <i>Napa Valley '08,'12</i>	265

MERITAGE & RED BLENDS

Continuum, "Proprietary Red" <i>Napa Valley '12</i>	225
Joseph Phelps, "Insignia" <i>Napa Valley '10,'12</i>	250
Opus One <i>Napa Valley '12,'14</i>	275



Denotes this wine has been rated 90+ with either Wine Spectator or Wine Enthusiast.

SUNDAY & MONDAY

Half price bottles of wine under \$100 or 25% off bottles of wine \$100 and over.

Vintages are subject to change due to availability.

RED WINES

PINOT NOIR

Castle Rock <i>Monterey County '14,'15</i>	35
Bogle <i>California '15</i>	9.5 / 15 / 37
MacMurray Ranch <i>Sonoma Valley '15</i>	52
La Crema Pinot Noir <i>Monterey '15</i>	12.5 / 17 / 47
O.P.P. <i>OR '15</i>	49
Meiomi Pinot Noir <i>Sonoma County '16</i>	49
Wild Horse <i>Central Coast '13,'14</i>	54
Willamette Valley Vineyard "Founder's Reserve" <i>OR '16</i>	15 / 21 / 55
Au Bon Climat <i>Santa Barbara '16</i>	61
Chanson Pinot Noir <i>Bourgogne France '11,'12,'14</i>	65
Erath Estate Selection <i>Willamette Valley '14</i>	72
Gary Farrell <i>Russian River Valley, CA '13,'15</i>	84
Cherry Pie <i>Stanly Ranch, Cameros, CA '14</i>	92
Beaux Fereres "Willamette" <i>Willamette Valley, OR '13,'14</i>	100
Domain Serene "Evenstad" <i>Willamette Valley, OR '11</i>	115
Ponzi "Aurora" <i>Oregon '15</i>	135

CABERNET SAUVIGNON

Red Diamond <i>Washington '13</i>	33
Chateau Souverain <i>California '15</i>	8.5 / 11.5 / 33
Joel Gott "815 Blend" <i>California '15</i>	11 / 15.5 / 43
Chateau Ste. Michelle Indian Wells <i>Columbia Valley '14</i>	46
Frei Brothers Reserve <i>Alexander Valley '14</i>	55
Franciscan <i>Napa Valley '14</i>	59
J. Lohr Hilltop <i>Paso Robles '15</i>	14 / 20 / 65
Emblem <i>Napa Valley '14</i>	62
Ferrari Carano <i>Sonoma '14</i>	75
Simi Landslide <i>Alexander Valley '13,'14</i>	17.5 / 24 / 79
Terra Valentine Spring Mountain District <i>Napa Valley '13</i>	85
Stag's Leap "Artemis" <i>Napa Valley '14</i>	99
Martin Ray "Diamond Mountain Vineyard" <i>Napa Valley '12</i>	100
Jordan <i>Alexander Valley '13</i>	101
Groth <i>Napa Valley '13</i>	105
Robert Mondavi "Oakville" <i>Napa Valley '11-12</i>	106
Ghost Block "Oakville" <i>Napa Valley '14</i>	110
Silver Oak <i>Alexander Valley '13</i>	115
Shafer "One Point Five" <i>Napa Valley '14</i>	149
Caymus <i>California '15</i>	140
Nickel & Nickel "Quarry Vineyard" <i>Napa Valley '12,'13</i>	155

INTERESTING REDS

Gascon Malbec <i>Mendoza '16</i>	8.5 / 11.5 / 33
Luigi Bosca Malbec <i>Mendoza '14</i>	49
Colome Estate Malbec <i>Argentina '14,'15</i>	59
Achaval Ferrer Malbec <i>Mendoza '16</i>	66
Vina Cobos by Paul Hobbs "Riglos" Gran Malbec <i>Mendoza '14</i>	70
Layer Cake Zinfandel <i>Puglia Italy '12,'14</i>	44
Rosenblum Red Zinfandel Vintners Cuvee	12 / 17 / 47
Frog's Leap Zinfandel <i>Napa Valley '14</i>	63
Spellbound Petite Syrah <i>California '15</i>	9.5 / 13 / 37
Cline "Cool Climate" Syrah <i>Sonoma Valley '15</i>	11 / 15.5 / 43
Two Hands "Gnarly Dudes" Shiraz <i>Australia '12,'15</i>	70
Shatter Gernache, <i>France '13</i>	55
Ruffino Chianti Classico Reserve <i>Italy '13,'14</i>	57
Owen Roe "Abbot's Table" <i>Columbia Valley, WA '14,'15</i>	58
Marques St. Caceres Grand Reserve <i>Rioja Spain '09,'10</i>	69
Orin Swift "The Prisoner" <i>Napa Valley '16</i>	79
Louis Bernard Châteauneuf Du-Pape <i>France '13</i>	75
Massolini Barolo <i>Italy '12</i>	95
Trefethen "Dragon's Tooth" <i>Napa Valley '15</i>	115
Altos Hormigas Vista Flores <i>Mendoza '15</i>	85

MERLOT

Red Rock <i>California '14</i>	8.5 / 11.5 / 33
J. Lohr Los Osos <i>Paso Robles '15</i>	42
Chateau Ste. Michelle "Indian Wells" <i>Washington '14</i>	11 / 15 / 43
Duckhorn "Decoy" <i>Sonoma County '15</i>	55
Stags' Leap <i>Napa Valley '14</i>	71
Northstar Merlot <i>Columbia Valley '11</i>	69
Twomey by Silver Oak <i>Napa Valley '13</i>	98

MERITAGE & RED BLENDS

Veramonte Primus <i>Chile '14</i>	11.5 / 16 / 54
Ghost Pines Red Blend, <i>California '15</i>	13 / 18 / 51
Mulderbosch "Faithful Hound" '14	55
North Star Stella Maris <i>Columbia Valley '11</i>	75
Estancia Meritage <i>Paso Robles '14</i>	73
Cain Cuvee <i>Napa Valley NV</i>	80
Duckhorn "Paraduxx" <i>Napa Valley '15</i>	88
Leviathan <i>California '13</i>	95
Pahlmeyer "Jayson" <i>Napa Valley '15</i>	105
Chateau Mont Cotes Du Rhone, <i>France '12</i>	108
Franciscan "Magnificent" <i>Napa Valley '12,'13</i>	110
Justin "Isosceles" <i>Napa Valley '11,'12,'14</i>	125