

# CHATEAU STE. MICHELLE 50 YEARS OF WASHINGTON'S FOUNDING WINERY

Chateau Ste. Michelle's rich heritage dates back to the era of the prohibition repeal in 1912. Originally established on an estate in Seattle, Chateau's founding fathers set to prove wrong the idea that great wine can only come from California or Italy. The winery has established itself as a pioneer of the Washington wine region, producing award-winning wines that come from combining Old World winemaking traditions with New World innovation. Enjoy these special selections of Ste. Michelle offerings, including the Anniversary Cabernet Sauvignon to celebrate 50 years – and more to come – of remarkable Ste. Michelle wines.

Chateau Ste. Michelle Sauvignon Blanc CV	10 / 14 / 39
Chateau Ste. Michelle Cabernet Sauvignon	12 / 17 / 47
Erath Resplendent Pinot Noir	12 / 17 / 47
Northstar Merlot	16 / 23 / 63
<i>Captain's List</i>	
Castella Della Sala Chardonnay	24 / -- / 95
Spring Valley Uriah Red Wine	22 / -- / 87
Col Solare Cabernet Sauvignon	26 / -- / 103

## WHITE WINES

### CHAMPAGNES & SPARKLING WINES

Bricco Riella Moscato D'Asti, Italy	8 / - / 31
Domaine Ste Michelle Brut, Washington	8.5 / - / 37
Cantine Maschio Prosecco, Italy	9 / - / 41
🍷 Domaine Carneros Taittinger, '12 CA	11 / - / 52
🍷 Moët & Chandon Imperial, France 375 ml.	64
🍷 Louis Roederer Premier Brut, France	85
🍷 Veuve Clicquot Yellow Label, France	105

### PINOT GRIS / GRIGIO

Ecco Domani Pinot Grigio, Italy '16	8 / 11 / 31
J. Vineyards Pinot Gris, Russian River Valley '14	42
King Estate Signature Pinot Gris, Lorane Valley, OR. '15	11 / 15.5 / 43
MacMurray Ranch Pinot Gris, Sonoma '13	45
🍷 Domaines Schlumberger Princes Abbes Pinot Gris, France '14	49
Santa Margherita Valdadige Pinot Grigio, Italy '15	55

### INTERESTING WHITES

Montevina White Zinfandel, California '15	7.5 / 10 / 29
Laurenz Singing Gruner Veltliner, Austria '15	9 / 12.5 / 35
Côtes-du-Rhône Belleruche Rosé France '16	9 / 12.5 / 35
Baron de Rothschild Bordeaux Blanc, France '15	11 / 15.5 / 43
Conundrum, California '15	11.5 / 15.5 / 45
Trimbach Gewurtztraminer, Alsace, France '12	51
🍷 Miraval Côtes de Provence Rosé France '15	52
St. Supery Virtú White Meritage, Napa '13	56

### RIESLING

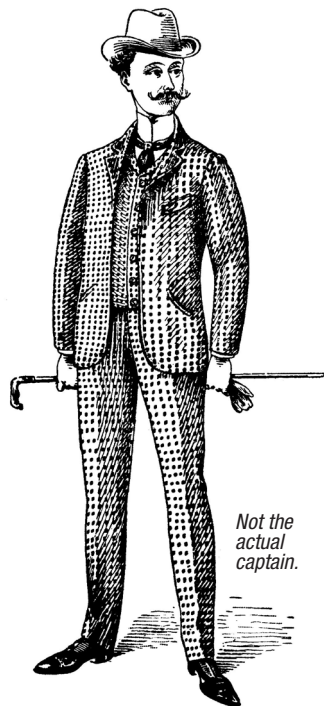
🍷 Chateau Ste Michelle, Columbia Valley WA '14	9 / 12.5 / 35
Trefethen Oak Knoll District, Napa Valley '15	12 / 17 / 47
🍷 Chateau Ste Michelle Eroica, Columbia Valley '13	46
Trimbach, Alsace, France '13	51

### SAUVIGNON BLANC / FUME BLANC

Dry Creek Chenin Blanc, Clarksburg, CA '15	29
Seaglass Sauvignon Blanc, Santa Barbara '16	8.5 / 11.5 / 33
🍷 Ferrari Carano Fume Blanc, Sonoma '15	10 / 14 / 39
Chateau Ste. Michelle, Washington '15	10 / 14 / 39
Veramonte Ritual Sauvignon Blanc, Chile, '14	40
Groom Sauvignon Blanc, Australia '15	41
Franciscan Sauvignon Blanc, Napa Valley '13	42
🍷 St. Supery Sauvignon Blanc, Napa '16	43
🍷 Kim Crawford Sauvignon Blanc, New Zealand '15	11.5 / 16 / 45
Robert Mondavi Fume Blanc, Napa '13	48
Cloudy Bay Sauvignon Blanc, New Zealand '15	59

### CHARDONNAY

Indaba, South Africa '14	29
B.R. Cohn, North Coast CA '14	32
Hess Select, Monterey '15	34
J. Lohr Riverstone, Arroyo Seco '15	9 / 12 / 35
St. Francis, Sonoma '14	38
Wente Morning Fog, Livermore Valley '14	39
Sonoma-Cutrer, Russian River Valley '15	43
Frei Brothers Reserve, Russian River Valley '14	45
🍷 Kendall-Jackson Grand Reserve, Central Coast CA '13	46
🍷 Line 39, CA '15	12 / 17 / 48
🍷 Mer Soleil Silver, Santa Lucia Highlands '13	49
Cuvaison Carneros, Napa '13	51
Wente Riva Ranch, Arroyo Seco, Monterey '13	51
🍷 Talbott Kali Hart Monterey '14	13.5 / 19 / 53
Jordan, Russian River Valley '14	66
🍷 Chalk Hill, Russian River Valley '13	75
Rombauer, Napa Valley '14	76
Freestone by Joseph Phelps, Sonoma '14	81
Cakebread Cellars, Napa '13	84
Kistler Les Noisetiers Sonoma	87
Far Niente, Napa '12	100



Not the actual captain.

## THE CAPTAIN'S LIST

### CABERNET SAUVIGNON

Far Niente, Napa Valley '12 - 185

Stag's Leap Wine Cellars S.L.V., Napa Valley '09 - 168

Shafer Hillside Select, Stags Leap District '08 - 255

Quilceda Creek, WA '10 - 260

### MERITAGE & RED BLENDS

Quintessa, Napa '12 - 220

Episode Bordeaux Blend, Napa Valley '08 - 225

Joseph Phelps Insignia Bordeaux Blend, Napa Valley '13 - 260

Opus One Bordeaux Blend, Napa Valley '13 - 275

Cardinale Meritage, Napa Valley '12 - 325



Denotes this wine has been rated 90+ with either Wine Spectator or Wine Enthusiast.

## RED WINES

### PINOT NOIR

Castle Rock, Monterey County, '12	34
Bogle, Clarksburg, CA '14	9 / 12.5 / 35
MacMurray Ranch, Sonoma Coast '13	41
Benton-Lane, Willamette Valley '13	42
Wild Horse, Central Coast '14	11 / 15.5 / 43
Brandborg Benchlands, Umqua Valley, Or. '14	45
Erath Resplendent Pinot Noir	12 / 17 / 47
Belle Glos Meiom, Sonoma County '16	49
Wente Riva Ranch, Arroyo Seco, Monterey '14	51
King Estate Signature, Oregon '13	14 / 20 / 55
🍷 Erath Estate Selection, Willamette Valley '14	69
🍷 Sonoma-Cutrer, Russian River Valley '10, '12	79
Gary Farrell, Russian River Valley '12	80
Cherry Pie Stanly Ranch, Carneros '12	89
Rochioli, Russian River Valley, '14	103

### CABERNET SAUVIGNON

Red Diamond, Washington '12	31
Main Street, Napa Valley '15	32
🍷 Chateau Souverain, CA '14	8.5 / 11.5 / 33
Joel Gott 815, California '14	10.5 / 14.5 / 41
🍷 Benziger, Sonoma, '12	45
Chateau Ste. Michelle Cabernet Sauvignon	12 / 17 / 47
🍷 J. Lohr Hilltop, Paso Robles '13	13.5 / 19 / 53
Hypothesis, Napa Valley '13	69
🍷 Simi Landslide, Alexander Valley '13	72
🍷 Rutherford Hill, Napa '13	80
Faust, Napa '14	90
Freemark Abbey, Napa Valley '13	94
Conn Creek Anthology, Napa, '13	95
🍷 Jordan, Alexander Valley '11	101
🍷 Robert Mondavi Oakville, Napa '11	102
Caymus, Napa Valley '14	115
Duckhorn, Napa Valley '14	120
Silver Oak, Alexander Valley '12	125

### INTERESTING REDS

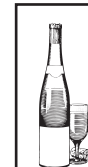
Rosenblum Vintner's Reserve Cuvee Zinfandel, CA	8.5 / 11.5 / 33
Gascon Malbec, Argentina '15	9 / 12.5 / 35
Ravenswood Old Vine Zinfandel, CA '13	35
Spellbound Petite Sirah, CA '13	9.5 / 13 / 37
Terra d'Oro Barbera, Amador County '13	39
Edmeades Zinfandel, Mendocino '12	40
Bodega Norton Reserve Malbec, Argentina '11	40
🍷 Murphy-Goode Liars Dice Zinfandel, Sonoma County '11	45
🍷 Shatter Grenache, France '12	47
Groom Shiraz, Australia '11	53
Yangarra 'Old Vine' Grenache, South Africa '14	53
Bodega Colome Estate Malbec, Argentina '13	55
🍷 Dry Creek Vineyards Old Vine Zinfandel, Sonoma County '12	59
Frog's Leap Zinfandel, Napa Valley '12	61
Trefethen Dragon's Tooth Red Blend, Napa Valley '10	85
Alcance Vigno 'Old Vine' Carignan, Chile '12	85
Rodney Strong Symmetry, Alexander Valley - Meritage '10	105

### MERLOT

Sebastiani, Sonoma '14	32
🍷 J. Lohr Los Osos, Paso Robles '13	8.5 / 11.5 / 33
Hogue Genesis, Columbia Valley '11	37
Chateau Ste Michelle Indian Wells, Columbia Valley '13	11 / 15 / 43
Clos Du Val, Napa Valley '12	56
🍷 Chateau St. Jean, Sonoma '10	55
🍷 Duckhorn Decoy, Sonoma '13	53
Northstar Merlot	16 / 23 / 63
Chateau Ste Michelle Canoe Ridge, Columbia Valley '13	65
Twomey by Silver Oak, Napa Valley '12	77
Northstar Merlot, Columbia Valley '12	92

### MERITAGE & RED BLENDS

Veramonte Primus Meritage, Chile '13	11 / 15.5 / 43
🍷 Mulderbosch Faithful Hound Red Blend, South Africa '12	45
🍷 Saved Red Blend, California '12	13.5 / 19 / 53
Ghost Pines Red Blend, California '13	55
Wente Murrieta's 'The Spur' Red Blend, Livermore Valley '14	55
Estancia Reserve Meritage, Paso Robles, '13	61
Hess 19 Block Cuvee, Napa Valley '11, '12	75
🍷 The Prisoner, Napa '15	75
🍷 Chateau Ste Michelle Artist Series Meritage, Columbia Valley '12	95
🍷 Chateau St. Jean Cinq Cepages, Sonoma '10	110



## SUNDAY WINE SPECIAL

Half price bottles of wine under \$100 or 25% off bottles of wine \$100 and over.

Vintages are subject to change due to availability.